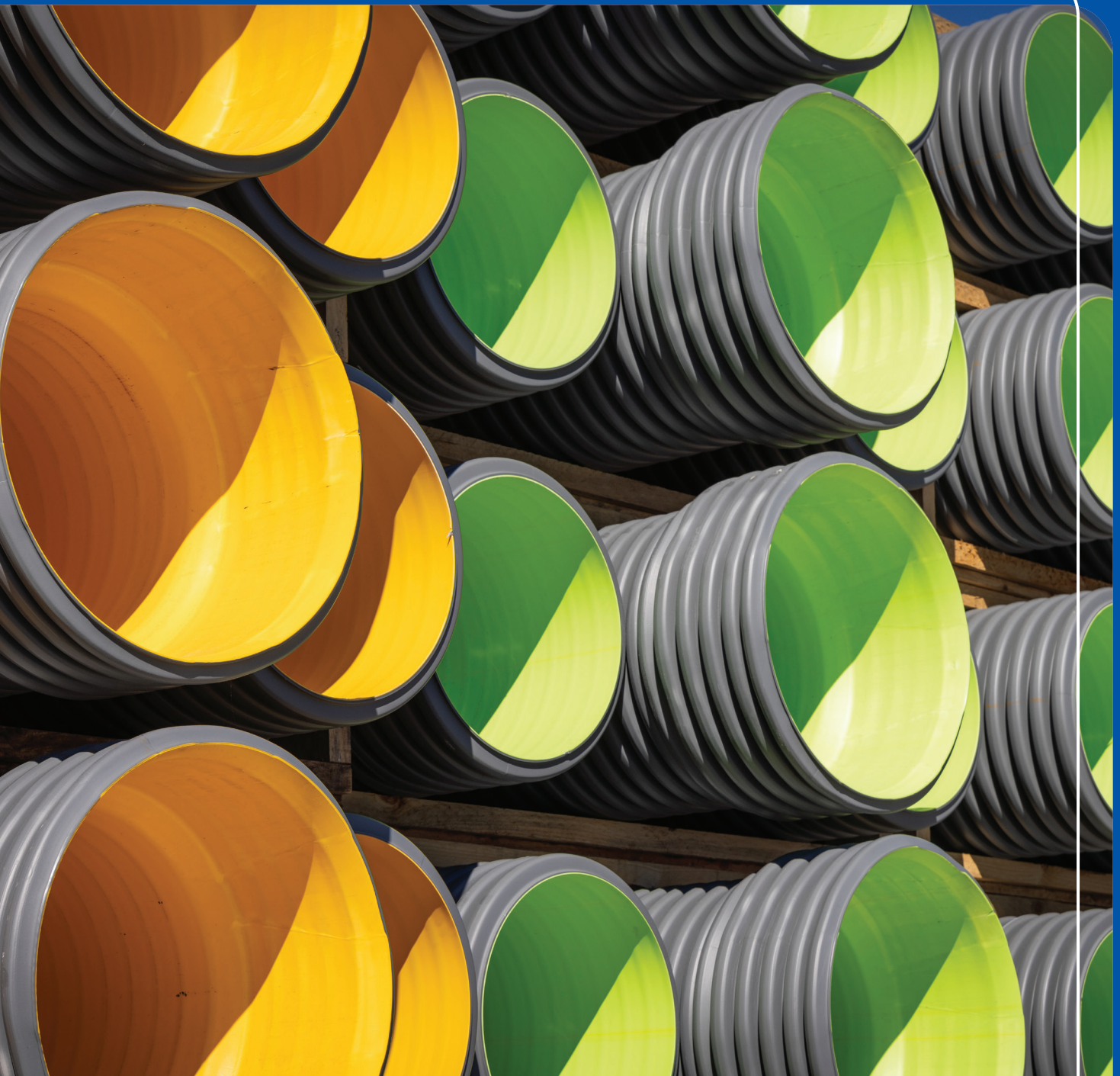


# iplex<sup>®</sup> SewerMax<sup>®</sup>

## Pipe Systems

The cutting-edge sewer pipe solution engineered for durability, efficiency and long-term sewer asset management.



## SewerMax makes perfect sense now and into the future.

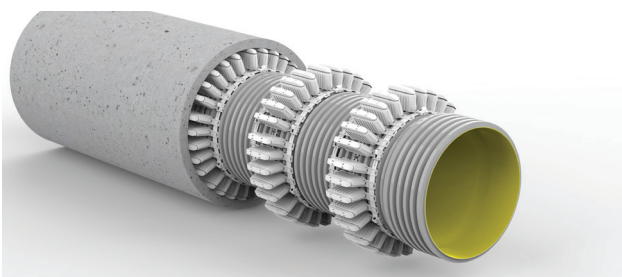
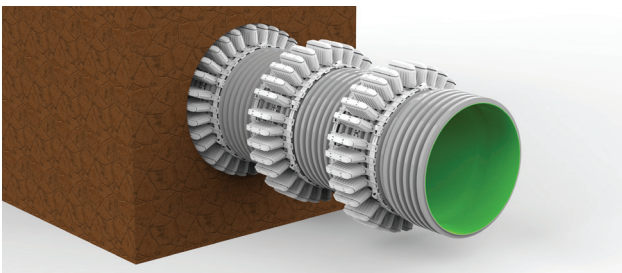
An Australian-manufactured structured wall polypropylene pipe system designed for non-pressure gravity sewer applications. The extensive range includes high quality fittings to provide your complete sewer pipeline solution.

A sewer pipe that blends structural performance with hydraulic efficiency. The structured wall profile optimises material efficiency without compromising performance.

### Applications

SewerMax pipes and fittings are suitable for the following applications:

- Gravity sewers
- Industrial sewers
- Pipe rehabilitation (relining)
- Boring



Examples of boring and relining applications.

### SewerMax Product Range

Product Code	DN	Nominal Lengths (minimum)	Approx pipe mass (kg/m)	SN (N/m/m)
GR10225	225	3000	4	10
GR10300	300	3000	8	10
GR10375	375	3000	11	10
GR10450	450	3000	14	10
GR10525	525	3000	18	10
GR10600	600	2765	23	10
GR10750	750*	TBA	TBA	10
GR10900	900*	TBA	TBA	10
GR101000	1000*	TBA	TBA	10
GR101200	1200*	TBA	TBA	10

### SewerMax+ Product Range

Product Code	DN	Nominal Lengths (minimum)	Approx pipe mass (kg/m)	SN (N/m/m)
GR20225	225	3005	6	20
GR20300	300	3005	10	20
GR20375	375	3030	17	20
GR20450	450	3015	20	20
GR20525	525	3005	27	20

Note: All diameters up to DN525 supplied with ribbed sockets. Sizes from DN600 supplied with cuff socket. SewerMax DN750 - DN1200 coming soon. Contact the Iplex team for more information.



## Features & benefits

### Built to last

- May provide a service life of over 100+ years<sup>1</sup>
- Water tight joints to resist leakage and tree root intrusion
- Chemical and abrasion resistance
- Resistant to sulphuric erosion

### Sustainable foundation

- Complies with Australian Standard AS/NZS 5065 "Polyethylene and polypropylene pipes and fittings for drainage and sewerage applications"
- The ease to install helps reduce construction-related impacts, minimises installation times and decreasing disruption to the environment

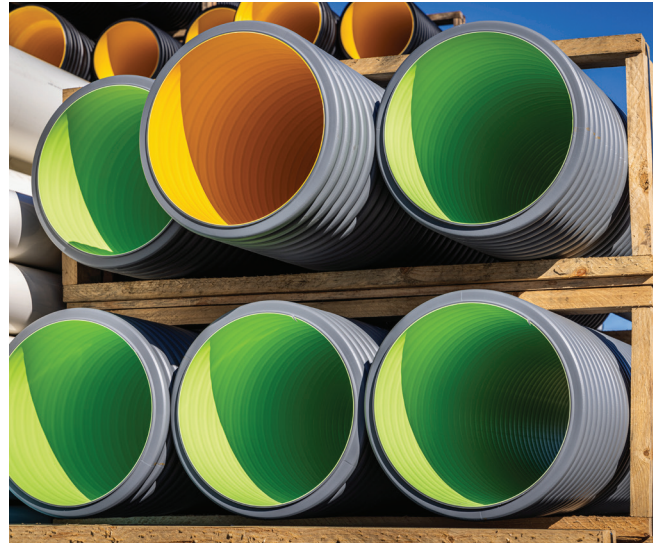
### Easy installation

- Wide range of sizes and fittings
- The rubber ring joints provide a watertight seal and resist infiltration, exfiltration and root intrusions

### Safer to use

- Easy to transport and lift due to lightweight nature
- Can be easily cut with hand saw or light mechanical saw
- Does not produce silica dust when cutting

<sup>1</sup> When installed, operated and maintained in accordance with the relevant product standards and manufactures guides



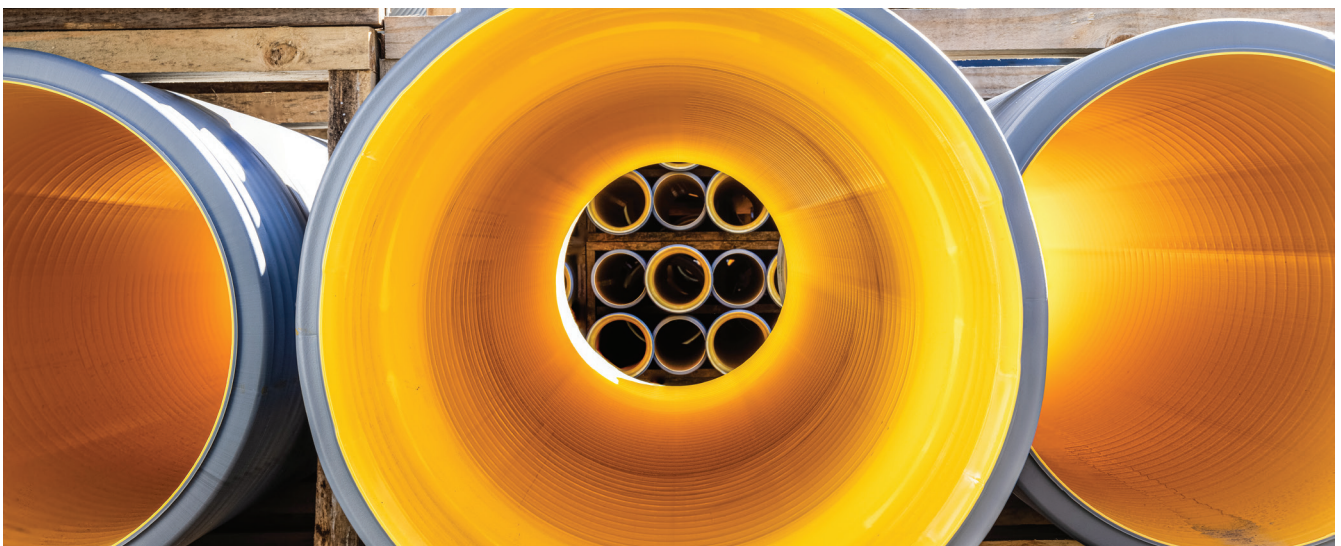
## Comprehensive range of fittings for a complete pipeline system

A range of standard fittings in all sizes is available for use with SewerMax pipes.

SewerMax fittings are fabricated with moulded socketed ends compatible with SewerMax pipes.

Other configurations, such as spigot ends are also available upon request with separate pipe couplings for jointing.

Repair clamps and jointing clamps are also available from Iplex providing a quick and permanent solution when repairing damaged SewerMax pipes or pipe joints.



# iplex<sup>®</sup>

## SewerMax<sup>®</sup>

Pipes are manufactured with a high performance spigot and socket rubber ring joint system.

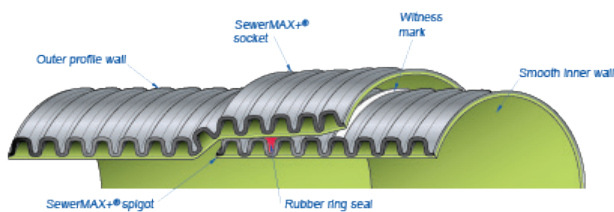
### Joint integrity you can trust

The elastomeric seal is placed in the second last trough from the spigot end and is compressed as the spigot enters the socket to seal the joint.

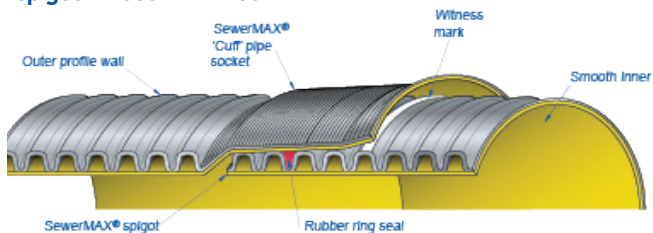
This system allows the installer to cut the pipe anywhere along the pipe barrel and make the joint with the same rubber ring seal.

The SewerMax rubber ring joint has been designed and tested to comply with the requirements of the Australian standards.

#### Cross section of the SewerMax and SewerMax+ structured wall socket and spigot DN225 - DN525



#### Cross section of the SewerMax structured wall socket and spigot DN600 - DN1200



### Ready to learn more?

Please scan code or visit our website to learn about its technical specifications or talk to our team

This document provides technical information about the SewerMax product range. It is subject to change without notice. Iplex does not provide design or other professional services and this document must not be relied upon as such. Before purchasing goods, always seek independent expert advice on the suitability of the goods for the intended purpose or their application. Any safety information is provided as a guide only and any reliance on or use of any such information is at your own risk. Except as provided in Iplex's terms and conditions of sale for these goods, and to the extent permitted by law, Iplex is not liable for any direct or indirect loss, damage or injury suffered by persons who rely on the information contained in this document. The designs, graphics, logos, trademarks (including SewerMax<sup>®</sup> and Iplex Pipelines<sup>®</sup> and Iplex<sup>®</sup>) and other intellectual property contained in this document are owned by or licensed to Iplex and you must not use, reproduce, or otherwise deal with the content without Iplex's prior written consent. IPLEX PIPELINES AUSTRALIA PTY LIMITED ABN 56 079 613 308 Iplex\_SewerMax Sales Collateral Flyer\_Jun24\_V1

