

SewerMax+ SN20 Pipe System

Higher stiffness for inground performance in buried gravity sewer systems.

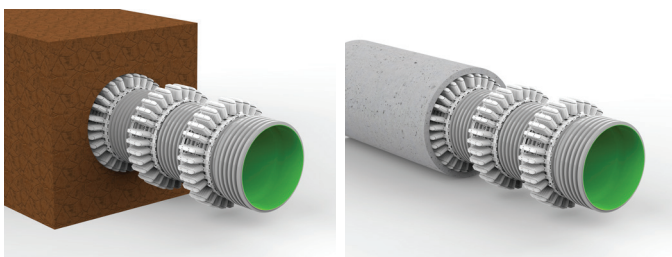
Iplex SewerMax+ SN20 polypropylene pipes enhance the proven performance of SewerMax SN10 for large-bore gravity sewers. Made of polypropylene, SewerMax+ pipes are durable and resistant to chemical attack and aggressive ground conditions, such as acid sulphate soils or saline ground waters.

Application

Iplex SewerMax+ pipes and fittings are suitable for deep buried installations in:

- Gravity sewers
- Industrial sewers
- Rehabilitation of failed pipes with slip lining techniques
- Trenchless installation*

*Use approved pipe locators equally spaced along the pipe. Boring is subject to ground conditions and associated risks.



SewerMax+ Pipe Range (SN20)

Product Code	DN	Effective Lengths (mm)	Approx Pipe Mass (kg/m)
GR20225C	225	3000	6
GR20300C	300	3000	10
GR20375C	375	3000	17
GR20450C	450	3000	20
GR20525C*	525	3000	27

*DN525 on application, contact Iplex for more information
Note: All diameters are supplied with rubber sockets.

Features and benefits

Built to last

- May provide service life of over 100+ years
- Water tight joints to resist leakage and tree root intrusion
- Chemical and abrasion resistance
- Resistant to sulphuric erosion

Easy installation

- Wide range of sizes and fittings
- Pipes can be cut to length on site and re-joined

Safer to use

- Easy to transport and lift due to lightweight nature
- Can be easily cut with hand saw or light mechanical saw
- Does not produce silica dust when cutting

Hydraulic performance

- The smooth inner bore enables excellent hydraulic performance which can result in reduced grades to accomplish a given flow

Inground performance

- The flexible nature of polypropylene allows SewerMax+ to accommodate pipe deflections (within specified limits) and soil movement without structural damage

Comprehensive range of fittings for a complete pipeline system

A range of standard fittings, including bends, junctions, closed ends, couplings, plugs, and reducers are available for use with SewerMax+ pipes.

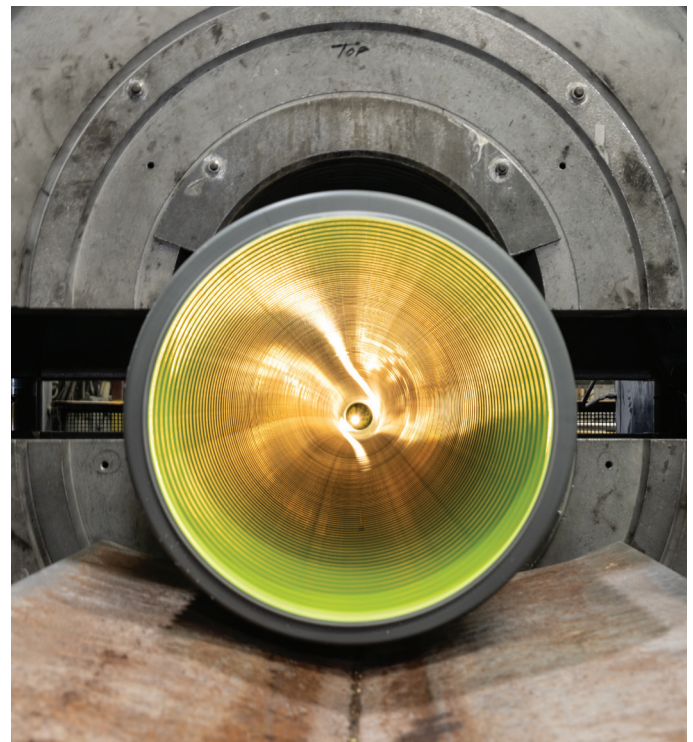
In addition, a range of stainless steel jointing and repair clamps are available for repairs and maintenance of SewerMax+ pipes. The stainless clamps have been designed specifically for the SewerMax family and comply with the requirements of Australian Standard "AS4181 Stainless steel clamps for waterwork purposes".

¹When installed, operated and maintained in accordance with the relevant product standards and manufactures guides

Ready to learn more?

Please scan code or visit our website to learn about its technical specifications or talk to our sales team.

This document provides technical information about the SewerMax+ product range. It is subject to change without notice. Iplex does not provide design or other professional services and this document must not be relied upon as such. Before purchasing goods, always seek independent expert advice on the suitability of the goods for the intended purpose or their application. Any safety information is provided as a guide only and any reliance on or use of any such information is at your own risk. Except as provided in Iplex's terms and conditions of sale for these goods, and to the extent permitted by law, Iplex is not liable for any direct or indirect loss, damage or injury suffered by persons who rely on the information contained in this document. The designs, graphics, logos, trademarks (including SewerMax+® and Iplex Pipelines® and Iplex®) and other intellectual property contained in this document are owned by or licensed to Iplex and you must not use, reproduce, or otherwise deal with the content without Iplex's prior written consent. IPLEX PIPELINES AUSTRALIA PTY LIMITED ABN 56 079 613 308 Iplex_SewerMax+ Sales Collateral Flyer_Aug 24_V2



Jointing you can trust

The elastomeric seal is placed in the second last trough from the spigot end and is compressed as the spigot enters the socket to seal the joint.

This system allows the installer to cut the pipe anywhere along the pipe barrel and make the joint with the same rubber ring seal.

The SewerMax rubber ring joint has been designed and tested to comply with the requirements of the Australian standards.

Cross section of the SewerMax+ structured wall socket and spigot DN225 - DN525

