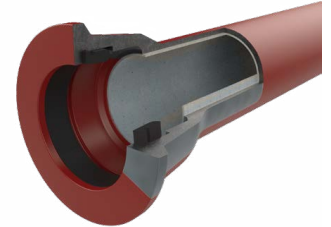
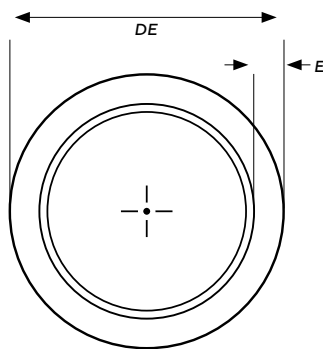


IRONTITE® RED PN35 ZINC/ALUMINIUM DUCTILE IRON PIPE

For sewerage and waste water applications Irontite® Red's range from DN100 to DN750 has a cement lining using calcium aluminate cement and a red epoxy external coating of Zn-Al primer (mean mass 400 gm/m²) + red liquid epoxy (min. 100 µm DFT) protects the pipe against damaging and corrosive effects of the soil and can be buried without sleeving in soils with a resistivity greater than or equal to 500 Ω cm, (soils below marine water table), or can be buried with sleeving (please check with local water authority).



The Jindal SAW manufactured pipe has a socket push-on joint (flexile jointing) with a unique EPDM gasket, clearly identifiable by the green markings on the face of the gasket, allows a quick and safe installation. Due to their high angular deviation, there is the potential to reduce the number of fittings, increasing the rate of installation.



Size Range DN100 - DN750
Nominal Pressure PN35

Effective Length
5.5m

Certification
AS/NZS 2280 "Ductile iron pipes and fittings"

WSAA Appraisal PA1802

ISO 2531/7186

DN	OUTSIDE DIAMETER (DE)		PIPE WALL THICKNESS, E (mm)	CEMENT MORTAR LINING THICKNESS (mm)
	OD (MM)	TOLERANCE (mm)	PN35	
100	122	+1, -2	4.9	5
150	177	+1, -2	5.0	5
200	232	+1, -2	5.0	5
225	259	+1, -2	5.0	5
250	286	+1, -2	5.2	5
300	345	+1, -2	5.9	5
375	426	± 2	7.0	5
450	507	± 2	8.1	5
500	560	± 2	8.8	5
600	667	± 2	10.2	5
750	826	± 2	12.3	5

OPTIONS*

External Coating

Polyurethane as per EN 15189 (700 µm – 2000 µm)

Zn primer (mean mass 200 gm/m²) + Bitumen coating

End Connections

JSAW-LOCK Double socket full restraint joint ends with welded bead ring

JSAW-MRJ – Mechanically restrained Joints

Sizes

ISO pipe sizes available

*Please note options will have minimum run quantities.

The information contained in this document should serve as a guide only and is subject to change without notice. For more information please contact Iplex Pipelines Australia Pty Ltd.