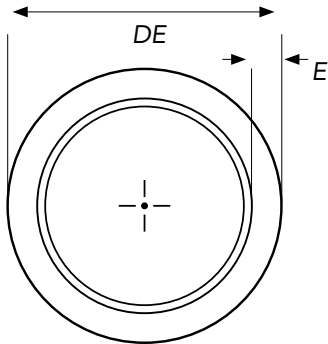


IRONTITE® FLANGE CLASS DUCTILE IRON PIPE



Size Range Nominal Pressure
DN100 - DN750 PN35

Effective Length
5.5m

Internal Lining

Cement lined or Unlined

External Lining – Zn-Al primer (mean mass 400gm/m²) + blue liquid epoxy (min. 100 µm DFT)

| DN | OUTSIDE DIAMETER (DE) | | PIPE WALL THICKNESS, E (mm) | CEMENT MORTAR LINING THICKNESS (mm) |
|-----|-----------------------|----------------|-----------------------------|-------------------------------------|
| | OD (MM) | TOLERANCE (mm) | PN35 | |
| 100 | 122 | +1, -2 | 7.4 | 5 |
| 150 | 177 | +1, -2 | 7.5 | 5 |
| 200 | 232 | +1, -2 | 8.5 | 5 |
| 225 | 259 | +1, -2 | 8.5 | 5 |
| 250 | 286 | +1, -2 | 9.6 | 5 |
| 300 | 345 | +1, -2 | 10.7 | 5 |
| 375 | 426 | ±2 | 11.8 | 5 |
| 450 | 507 | ±2 | 11.8 | 5 |
| 500 | 560 | ±2 | 11.8 | 5 |
| 600 | 667 | ±2 | 12.9 | 5 |
| 750 | 826 | ±2 | 15.1 | 6 |

End connection – socket push-on joint (flexible jointing) with a unique EPDM gasket, clearly identifiable by the green markings on the face of the gasket

OPTIONS*

External Coating

Zn-Al primer (mean mass 400 gm/m²) + Red liquid epoxy (min. 100 µm DFT)

Polyurethane as per EN 15189 (700 µm – 2000 µm)

Zn primer (mean mass 200 gm/m²) + Bitumen coating

End Connections

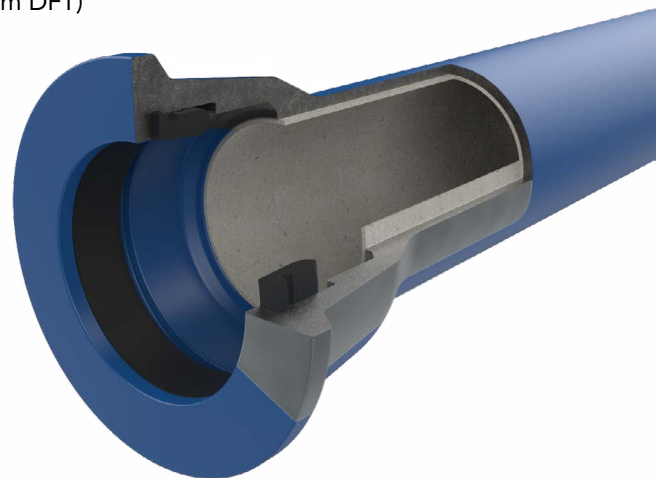
Flange to AS 4087/ AS 2129 / ANSI class drillings

Sizes

ISO pipe sizes available

Flanged pipework

Custom flanged pipework with a bitumen cement internal line finish or thermal bonded coating (up to 2.7m in length) is available



*Please note options will have minimum run quantities.

The information contained in this document should serve as a guide only and is subject to change without notice. For more information please contact Iplex Pipelines Australia Pty Ltd.