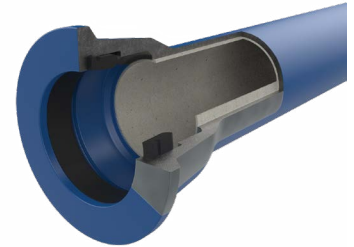
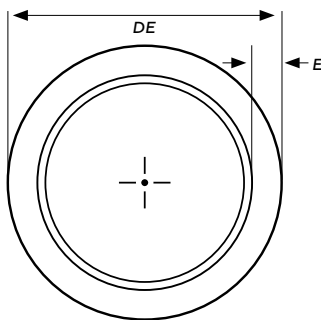


IRONTITE® PN35 ZINC/ALUMINIUM DUCTILE IRON PIPE

Ideal for potable water applications Irontite® Blue ductile iron pipe has an internal lining of cement mortar offering excellent resistance against corrosion while providing superior hydraulic performance. The cement lining creates a smooth and dense internal surface. The external coating of Zn-Al primer (mean mass 400 gm/m²) + blue liquid epoxy (min. 100 µm DFT) protects the pipe against damaging and corrosive effects of the soil and can be buried without sleeving in soils with a resistivity greater than or equal to 500 Ω cm (soils below marine water table), or can be buried with sleeving (please check with local water authority).



The Jindal SAW manufactured pipe has a socket push-on joint (flexile jointing) with a unique EPDM gasket, clearly identifiable by the green markings on the face of the gasket, allows a quick and safe installation. Due to their high angular deviation, there is the potential to reduce the number of fittings, increasing the rate of installation.



Size Range **Nominal Pressure**

DN100 - DN750 PN35

Effective Length

5.5m

Certification

AS/NZS 2280 "Ductile iron pipes and fittings"

AS/NZS 4020 "Testing of products for use in contact with drinking water"

WSAA Appraisal PA1802

ISO 2531/7186

DN	OUTSIDE DIAMETER (DE)		PIPE WALL THICKNESS, E (mm)	CEMENT MORTAR LINING THICKNESS (mm)
	OD (MM)	TOLERANCE (mm)	PN35	
100	122	+1, -2	4.9	5
150	177	+1, -2	5.0	5
200	232	+1, -2	5.0	5
225	259	+1, -2	5.0	5
250	286	+1, -2	5.2	5
300	345	+1, -2	5.9	5
375	426	± 2	7.0	5
450	507	± 2	8.1	5
500	560	± 2	8.8	5
600	667	± 2	10.2	5
750	826	± 2	12.3	6

OPTIONS*

Internal Lining

Bituminous seal coat to AS/NZS 4020

Sulphur Resistant Cement (SRC)

Polyurethane as per EN 15655

External Coating

Polyurethane as per EN 15189 (700 µm – 2000 µm)

Zn primer (mean mass 200 gm/m²) + Bitumen coating

End Connections

JSAW-LOCK Double socket full restraint joint ends with welded bead ring

JSAW-MRJ – Mechanically restrained Joints

Sizes

ISO pipe sizes available

*Please note options will have minimum run quantities.

The information contained in this document should serve as a guide only and is subject to change without notice. For more information please contact Iplex Pipelines Australia Pty Ltd.