

REPAIR CLAMPS SELECTION CHART

NOM. PIPE SIZE DN	STEEL		ECOPUR		CICL		AC		ABS*1	GRP*2	RC	COPPER	HDPE *3	PVC-U/M*4	
	AS/NZS 2280	MSCL AS 1579	GWI AS 1074	CLASS C&K EN 545:2010 EN 545:2007	CLASS B AS 1724	CLASS C AS 2544	CLASS AB AS 1711	CLASS CD AS 1711	SERIES 1 AS 3518	SERIES 1 AS 3571	AS 4058	AS 1432	AS/NZS 4130	SERIES 1 (U) AS/NZS 1477 (M) AS/NZS 4765	SERIES 2 (U) AS/NZS 1477 (M) AS/NZS 4765
40			748901004701 48mm						748901004701 48mm			N/A 38mm		748901004701 48mm	
50			748901005901 60mm					748901006901 69mm	748901005901 60mm			748901004701 51mm	7489010050021 50mm	748901005901 60mm	
65			748901007601 76mm					748901007601 79mm	748901007501 75mm			748901006301 64mm	7489010063021 63mm	748901007501 75mm	
80	748901009502 96mm		748901008502 89mm		748901009502 96mm	748901009502 96mm	748901009502 96mm	748901009502 96mm	748901008502 89mm			748901007601 76mm	7489010075021 75mm	748901008502 89mm	
100	748901012002 122mm	748901011402 114mm	748901011402 114mm	748901011402 118mm	748901012002 122mm	748901012002 122mm	748901012002 122mm	748901012002 122mm	748901011402 114mm	748901012002 122mm		748901009502 101mm	7489010110021 110mm	748901011402 114mm	748901012002 122mm
125		748901014002 140mm	748901014002 140mm	748901014002 144mm		748901014002 149mm			748901014002 140mm			748901012002 127mm	7489010125021 125mm	748901014002 140mm	
150	748901017502 177mm	748901016002 168mm	748901016002 165mm	748901016802 170mm	748901017502 177mm	748901017502 177mm	748901017502 177mm	748901017502 177mm	748901016002 168mm	748901017502 177mm	748901019002 197mm	748901015002 152mm	7489010160031 160mm	748901016002 160mm	748901017502 177mm
175						748901020002 203mm							7489010180031 180mm	748901020002 200mm	
200	748901023002 232mm	748901021502 219mm		748901021502 222mm	748901023002 232mm	748901023002 232mm	748901023002 232mm	748901023002 232mm	748901021502 225mm	748901023002 232mm		748901020002 203mm	7489010200031 200mm	748901021502 225mm	748901023002 232mm
225	748901025003 259mm	748901025003 257mm			748901025003 259mm	748901025003 259mm	748901025003 259mm	748901025003 259mm	748901025003 250mm	748901025003 259mm	748901027503 279mm	748901022502 229mm	7489010225041 225mm	748901025003 250mm	748901025003 259mm
250	748901028503 286mm	748901027003 273mm		748901027003 274mm	748901028503 286mm	748901028503 286mm	748901028503 286mm	748901028503 286mm					7459010250041 7489010280061 250mm 280mm	748901027503 280mm	748901028503 286mm
300	748901034003 345mm	748901032003 324mm		748901032003 326mm	748901033003 334mm	748901034003 345mm	748901033003 334mm	748901034003 345mm	748901031003 315mm	748901034003 345mm	748902035004 362mm		7489010315061 315mm	748901031003 315mm	748901034003 345mm
350		748902035004 355mm							748902035004 355mm	748902039004 399mm			7489020350061 355mm	748902035004 355mm	
375	748902041004 426mm	748902040004 406mm		748902037004 377mm	748902041004 413mm	748902041004 426mm	748902041004 413mm	748902041004 426mm	748902040004 400mm	748902041004 426mm	748902044004 445mm			748902040004 400mm	748902041004 426mm
400		748902045004 457mm		748902041004 429mm					74802045004 450mm	74802045004 453mm			7489020400061 400mm	74802045004 450mm	
450	748902049004 507mm	748902049004 508mm		748902047004 480mm	748902049004 492mm	748902049004 507mm	748902049004 492mm	748902049004 507mm	748902049004 500mm	748902049004 507mm	748903053004 533mm		7489020450081 450mm	748902049004 500mm	748902049004 507mm
500	748903056004 560mm	748903053004 559mm		748903053004 532mm	748903053004 545mm	748903056004 560mm			748903056004 560mm	748903056004 560mm			7489020500081 500mm	748903056004 560mm	748903056004 560mm
525							748903057004 572mm	748903057004 587mm		748903057004 587mm	748903060004 616mm		7489020560101 560mm		
600	748903065004 667mm	748903065004 660mm		748903062004 635mm	748903065004 650mm	748903065004 667mm	748903065004 650mm	748903065004 667mm	748903062004 630mm	748903065004 667mm	748903069004 699mm		7489020630101 630mm	748903062004 630mm	748903065004 667mm

Note: The AVK Repair Clamp range extends beyond DN600. For sizes and configurations not listed above, please contact AVK for assistance. Numbers in blue can be optioned for width of clamp, see table below.

*1 Min. required pipe rating for clamp application: PN9 | *2 Min. required pipe rating for clamp application: SN10,000 | *3 Min. required pipe rating for clamp application: U=PN9 / M=PN12 | *PN16 rating for all clamps in this chart

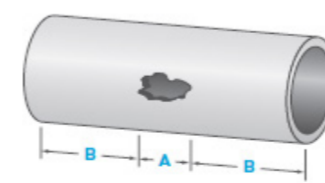
Repair clamps typical specifying sequence table - 748901028503

748 - AVK Series	90	1	0285	03	0
90 -	Repair Clamps				
Number of Parts -	1 = 1 Part 2 = 2 Parts 3 = 3 Parts 4 = 4 Parts 5 = 5 Parts 6 = 6 Parts				
Minimum Dia -	0047 through to 1200				
Clamp Width -	01 = 150mm 02 = 200mm 03 = 300mm through to 16 = 1600mm				
Pipe Application	0 = Rigid (type R) 1 = HDPE 2 = OPVC (type F) 3 = Gas				

It is important that there is sufficient contact between the edge of the area to be repaired and the end of the clamp. The following table gives a guide to the recommended minimum for sealing dimension "B" in the diagram.

Minimum required seal length 'B'

NOM. PIPE DIA. DN	MIN. SEAL LENGTH 'B' mm	STANDARD CLAMP LENGTHS mm
40-80	50	150
100-200	65	200
225-300	100	300
350-600	150	400



Minimum clamp length = A + 2B



SINGLE PART REPAIR CLAMP



DOUBLE PART REPAIR CLAMP



MULTI PART REPAIR CLAMP

Clamps specified for HDPE pipe application should be regarded as an OD Clamp

STANDARD CLAMP LENGTHS mm	NUMBER OF PARTS	OD RANGE mm
150	1	5
200-400	1	10
400	2	20
400 & above	3	30

AVK Wang Pty Ltd

Cnr Sandford Road & Gibson Street
Wangaratta, VIC 3677
Australia
T: +61 8 8368 0900
F: +61 8 8868 0970
E: enquiries@avkau.com.au
W: www.avkcivil.com.au