

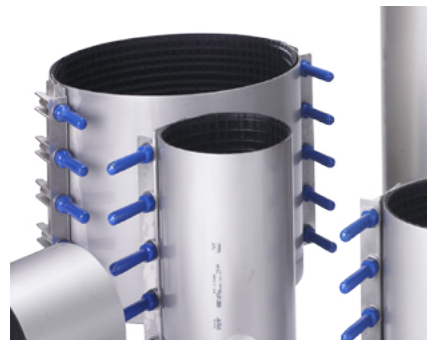


EXPECT
PROMPT
RESPONSE

Expect... **AVR**

STAINLESS STEEL REPAIR CLAMPS DN40-1200

REPAIR CLAMPS



The use of high quality Stainless Steel and Nitrile Rubber gaskets permits use of the product in a range of applications from reticulated water and sewerage to industrial use. A repair clamp's variable OD range enables a single clamp to adapt to any pipe OD within that variable range. This dramatically reduces the stocking requirement to cater for each individual pipe type and size.



**FAST, PERMANENT
REPAIR AND
REINFORCEMENT
SOLUTION FOR
MOST PIPE TYPES
AND SIZES**

Main features and benefits:

- Manufactured from grade 316 Stainless Steel for superior corrosion protection
- Nitrile rubber gaskets provide a potable water contact approved seal and insulates against galvanic corrosion
- Fully passivated Stainless Steel underscores the quality and longevity of the product
- Clamp design permits the installation of a single clamp on a range of pipe diameters

Application:

Repair clamps provide a permanent repair solution for most leaking, cracked or damaged pipe. They are also an effective means of reinforcing old pipe in critical areas or providing an effective seal for decommissioned service connections.

- All sharp surfaces lished to avoid injury to the installer
- Product supplied with detailed installation instructions
- Dry film anti-galling coating employed to minimise galling of the Stainless Steel fasteners
- Manufacturing facility certified to the ISO 9001 quality assured standard

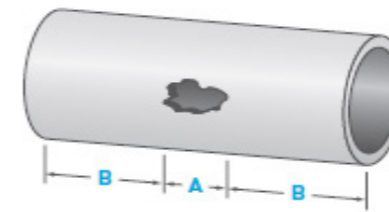
Technical Data:

- DN40 to DN1200
- Maximum operating pressure up to 690mm OD: 1600 kPa
- Temperature range from -10°C to 60°C
- Product certification to AS 4181 Lic. No SMK1785

Note: AVK Repair Clamps should not be used to join pipe and DO NOT provide axial pipe restraint. The use of a Vari-Gib Pipe Coupling is recommended for pipe joining applications.

CALCULATING THE MINIMUM RECOMMENDED CLAMP LENGTH

The diagram and table below provide a method of ensuring that the selected clamp is no less than the minimum recommended length for an effective seal. Minimum recommended clamp length = A + 2B



Example: Calculating the minimum clamp length. You require a clamp to repair a DN300 Sr.2 PVC pipe with a 100mm wide hole.

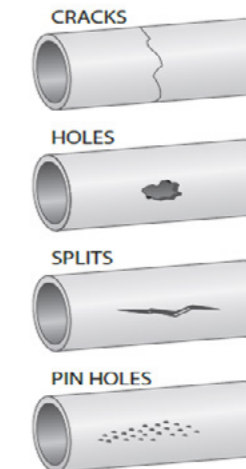
1. Determine the minimum required clamp length with formula (A+2B).
A = Damage dimension = 100mm
B = Seal length (extract from table below) = 100mm
Therefore MINIMUM clamp length = (100 + [2x100]) = 300mm.
2. Standard clamp length from table below for a DN300 pipe = 300mm. Therefore a standard clamp from the repair clamp selection chart can be used.
3. However if the damage had been more than 100mm in length, a standard clamp (300mm long in this example) would be too short.
4. Contact AVK in such an instance for assistance for the next available option in clamp length.

Minimum required seal length 'B'

NOM. PIPE DIA. DN	MIN. SEAL LENGTH 'B' mm	STANDARD CLAMP LENGTHS mm
40-80	50	150
100-200	65	200
225-300	100	300
350-600	150	400

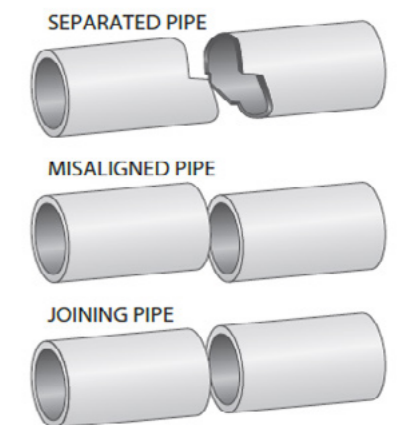
When repairing a damaged pipe, it is important to select a clamp of the right length relative to the length of the damage being repaired. For effective sealing, there should be sufficient gasket in contact with the pipe between the edge of the damage and the end of the clamp on each side.

REPAIR CLAMPS APPLICATIONS RECOMMENDED



SINGLE PART
REPAIR CLAMP

REPAIR CLAMPS APPLICATIONS NOT RECOMMENDED



DOUBLE PART
REPAIR CLAMP



MULTI PART
REPAIR CLAMP

**EXPECT
SOLUTIONS, NOT
JUST PRODUCTS**

TAPPED OFFTAKE REPAIR CLAMPS DN50-1200



The combination of quality materials and superior design allows this clamp to be utilised in a variety of applications and industries where a tapping is required off an existing pipe.

Main features and benefits:

- Tapped Offtake Repair Clamps provide rehabilitation to damaged and unstable pipes that require a tapping installation
- Offtake is a stainless steel female BSP threaded socket from DN20 - DN100 for the connection of threaded valves and fittings
- Clamp body provides pipe reinforcement once the pipe is tapped
- Each clamp fits a range of pipe diameters
- Passivated 316 stainless steel construction

maximises corrosion protection and performance life

- Full-circle nitrile rubber gasket insulates against galvanic pipe corrosion
- Supplied with plastic thread protectors
- All sharp surfaces lished to avoid harm to the installer
- Dry film anti-galling coating employed to minimise galling of the stainless steel fasteners
- Manufacturing facility certified to ISO 9001 Quality Assured Standard

**FOR TAPPING INTO
OLD, UNSTABLE
OR DAMAGED
PIPE WHERE
BOTH TAPPING &
REINFORCEMENT
ARE A
REQUIREMENT**

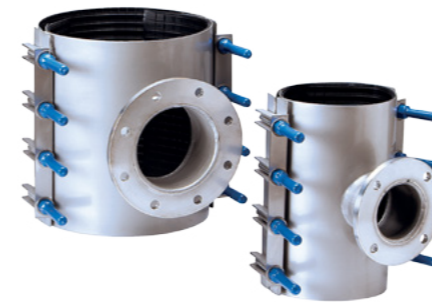
Application:

A fast and economical way to tap into old or unstable pipe and repair pipes with damaged service connections. Also provides an effective means of conducting a tapping under pressure.

Technical Data:

- DN50 to DN1200
- DN20 to DN100 offtake sizes (depending on host pipe size)
- Maximum operating pressure of 1600 kPa (up to and including DN400)
- Temperature range from -10°C to 60°C
- Product certification to AS 4181

FLANGED OFFTAKE CLAMPS DN100-900



The combination of quality materials and superior design allows this clamp to be utilised in a variety of applications and industries where a flange to flange connection is required off an existing pipe.

Main features and benefits:

- Flanged offtake clamps provide a flanged 90 degree offtake for connection to valves and other flanged fittings
- Enables a pipe to be tapped while under mains pressure, avoiding the need for water supply shut-off
- Avoids the need to cut out sections of pipe, making time-consuming reconnections and supply shut-off's obsolete
- Available for most pipe types and sizes

- Passivated 316 stainless steel construction maximises performance life
- Full-circle nitrile rubber gasket seal
- Dispatched with installation instructions
- Plastic thread protectors supplied
- All rough surfaces lished to avoid harm to the installer
- Dry film anti-galling coating employed to minimise galling of the stainless steel fasteners
- Manufacturing facility certified to ISO 9001 quality assured standard



**STAINLESS STEEL
FLANGED OFFTAKE
CLAMPS FOR 'T'
CONNECTIONS
ONTO NEW OR
EXISTING PIPING
SYSTEMS**

Application:

A flanged offtake clamp is designed to provide a flanged connection off a new or existing pipeline. This clamp is ideal for tapping pipelines under pressure or for hydrant and air valve installations on existing pipelines.

Technical Data:

- DN100 to DN900
- DN80 to DN300 offtake sizes
- Maximum operating pressure of 1600 kPa (up to and including DN450)
- Frange drilling and class options of PN16 to AS 4087 with Table C, D compatible drilling (AS 2129)
- Temperature range from -10°C to 60°C
- Product certification to AS 4181

Caution: The clamp should NOT be rotated after it is assembled around the pipe.

HDPE CLAMPS DN50-600

HDPE CLAMPS



Stainless Steel HDPE Clamps provide an alternative to conventional onsite HDPE repair and tapping methods, thereby negating the need for tedious electro fusion processes. HDPE Clamps are available for both repair and tapping applications with the availability of BSP threaded and AS 4087- PN16 flanged offtakes as standard. Other thread and flange types are available upon request.

Main features and benefits:

- Manufactured from grade 316 stainless steel for superior corrosion protection
- Nitrile rubber gaskets provide a potable water contact approved seal
- Fully passivated stainless steel underscores the quality and longevity of the product
- Dry film anti-galling coating employed to minimise galling of the stainless steel fasteners
- Design features compensate for differential

expansion and contraction of HDPE pipe with temperature variation

- Trench friendly mechanical application negates the need for tedious conventional electro fusion processes associated with repair and tapping HDPE pipe
- Rigid clamp body supports and augments the HDPE pipe in tapping applications
- Dispatched with detailed installation instructions
- Manufacturing facility certified to ISO 9001 quality assured standard

Technical Data:

- OD110 to OD600
- Maximum operating pressure of 1600 kPa
- Temperature range from -10°C to 60°C
- Offtake threaded BSP from 20mm to 100mm. Offtake flanged 80mm to 200mm in PN16 to AS 4087 with Table C, D compatible drilling (AS 2129)

Note: Other offtake specifications are available upon request. Available offtake DN size is limited to no more than 1/3 the parent pipe OD.

Application:

Mechanical application is fast and expedient requiring only pipe surface cleaning followed by pipe/clamp gasket lubrication (supplied) before clamp application and tensioning Not recommended for HDPE pipe rated less than PN12.5.



**STAINLESS STEEL
CLAMPS PROVIDING
FAST, EXPEDIENT
ON-SITE REPAIR
AND TAPPING
SOLUTIONS FOR
HDPE PIPE**

SEWER OB JUNCTION CLAMPS DN100-450

SEWER CLAMPS



Stainless Steel Sewer Junction Clamps for fast and permanent sewer branch connections and repairs on non-pressure sewer pipelines, DN100 - DN450.

Main features and benefits:

- Simple and permanent installation
- Quickly repairs and reconnects broken sewer junctions
- Expedient means of replacing property branches on renewed/relined pipes
- 45° and 90° junctions available
- uPVC access coupling fixed to off-take (as standard) for convenient solvent weld connections to PVC property drains
- Fully constructed from 316 stainless steel for high corrosion protection

- Full circle nitrile rubber gasket
- Fully passivated
- All sharp surfaces finished to avoid injury
- Plastic thread protectors
- Dry film anti-galling coating employed to minimise galling of the stainless steel fasteners
- Off-take does not interfere with CCTV camera inspections
- Clamp design provides rehabilitation to old or damaged pipes
- Manufacturing facility certified to ISO 9001 quality assured standard

Application:

Ideally suited to installing a new property sewer branch on an existing main, or to repair and reconnect a damaged property branch. Ideal for reconnecting a property branch on renewed or relined sewers.

Technical Data:

- DN100 to DN450
- DN100, 150 & 225 offtake sizes (depending on host pipe size)
- Maximum operating pressure of 100 kPa
- Temperature range from -10°C to 60°C



**FOR FAST,
PERMANENT
BRANCH
CONNECTIONS ON
NON-PRESSURE
SEWER PIPELINES**

AVK Wang Pty Ltd

Cnr Sandford Road & Gibson Street
Wangaratta, VIC 3677
Australia

T: +61 8 8368 0900
F: +61 8 8868 0970
E: enquiries@avkau.com.au
W: www.avkcivil.com.au

Expect... **AVR**