

SewerMAX+[®] SN20 Pipe Systems

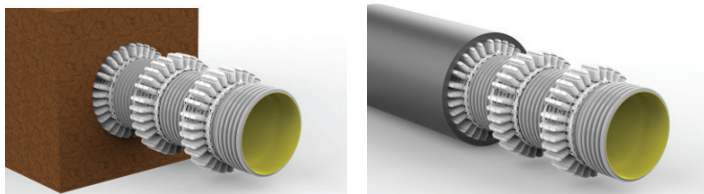
Higher stiffness for increased performance in deep gravity sewer systems

Iplex SewerMAX+[®] polypropylene pipes provide robust benefits and twice the stiffness of the standard range, further building the envelope of suitable applications. SewerMAX+[®] is manufactured from durable polypropylene. It is highly resistant to chemical attacks common in sewers and aggressive ground conditions, such as acid sulphate soils or saline ground waters.

Applications

Iplex SewerMAX+[®] pipes and fittings are suitable for deep buried installations in:

- Gravity sewers
- Industrial sewers
- Rehabilitation of failed pipes with slip lining techniques
- Trenchless installation*



*Use approved pipe locators equally spaced along the pipe. Boring is subject to ground conditions and associated risks.

SewerMAX+[®] Pipe Range

DN	Effective Lengths (mm)	Approx. Pipe Mass (kg/m)	SN (N/m/m)
225	3005	6	20
300	3005	10	20
375	3030	17	20
450	3015	20	20
525	3005	27	20

Note: All diameters are supplied with ribbed sockets.



To learn more about the technical specifications scan the QR code or visit our website.

☎ 13 10 86

🌐 iplex.com.au/sewermax-sn20

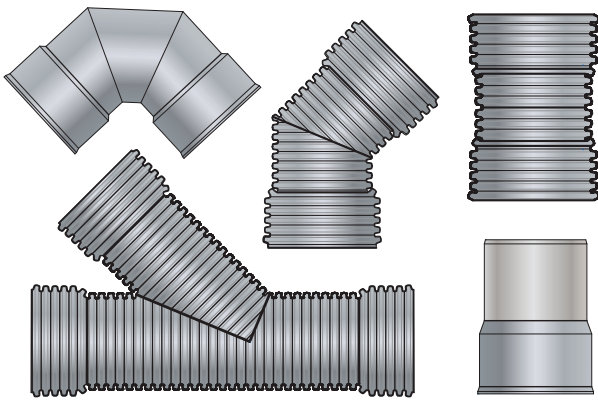
iplex[®]

We Know Water

Comprehensive range of fittings for a complete pipeline system

A range of standard fittings, including bends, junctions, closed ends, couplings, plugs, and reducers are available for use with SewerMAX+® pipes.

In addition, a range of stainless steel jointing and repair clamps are available for repairs and maintenance of SewerMAX+® pipes. The stainless clamps have been designed specifically for the SewerMAX® family and comply with the requirements of Australian Standard "AS4181 Stainless steel clamps for waterwork purposes".



*Selection only, please visit iplex.com.au for full fittings range

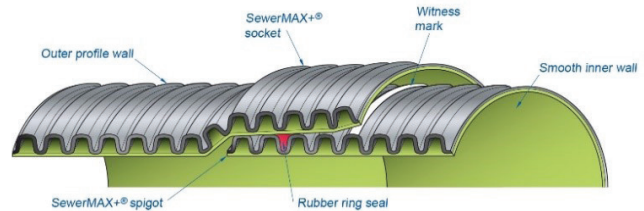
Jointing you can trust

SewerMAX+® pipes are manufactured with a high performance spigot and socket rubber ring joint system for water tightness requirements in accordance with AS/NZS5065.

The Standard specifies pressure and vacuum tests for water tightness and interface pressure tests for joint tightness. These conditions have shown to provide high level of resistance to tree root intrusion for plastic pipes.

The elastomeric seal is placed in the second last trough from the spigot end and is compressed as the spigot enters the socket to seal the joint.

SewerMAX+® pipes can be cut anywhere along their length for adjustments in the field and re-joined with the same rubber ring joint system.



SewerMAX+® spigot & socket rubber ring joint assembly DN225mm– DN525mm.

Features and Benefits

- | | |
|--|--|
| • Toughness | The tough, ductile nature of polypropylene enable pipes to resist accidental impact without damage |
| • Abrasion and corrosion resistant | Polypropylene is resistant to sulphuric erosion, acid sulphate soils and saline groundwaters |
| • Effective rubber ring joint | Designed for ease of assembly and jointing
Pipes can be cut to length on site and re-joined |
| • Inground performance | The flexible nature of polypropylene allows SewerMAX+® to accommodate pipe deflections (within specified limits) and soil movement without structural damage |
| • Smooth bore for hydraulic performance | The smooth inner bore enables excellent hydraulic performance which can result in reduced grades to accomplish a given flow |
| • Lightweight for ease of installation | Can be easily maneuvered in confined areas by hand or with light lifting equipment
Site handling and efficiency is improved |
| • High pipe stiffness | Allows deeper installations |

DISCLAIMER: The information contained in this brochure should service as a guide only and is subject to change without notice. Iplex Pipelines Australia Pty Ltd does not invite any person to act or rely upon such information and liability for such information is excluded. In particular, new technology is developed rapidly, product specifications, designs and components may change and Iplex Pipelines Australia Pty Ltd reserves the right at its discretion to make changes as it see fit. The information contained in this brochure does not form part of the terms and conditions of sale or constitute the description of any goods to be supplied by Iplex Pipelines Australia Pty Ltd or its distributors. Before purchasing goods, customers should source current product information from their distributor or seek expert advice on their particular intended use and application for the product. Copyright© 2021 Iplex Pipelines Australia Pty Ltd. No part of this brochure may be reproduced, stored in a retrieval system or transmitted in any form, electronic, mechanical, recording or otherwise without the consent of Iplex Pipelines Australia Pty Ltd. IPLEX PIPELINES AUSTRALIA PTY LIMITED ABN 56 079 613 308
IPLEX_DIGITAL_FLYER_SEWERMAX+_AUG23

iplex[®]
We Know Water